



INC-35A NEW

CONTINUOUS INC MODULE

The INC-35A is the result of in-house development of Azimuth's proprietary Continuous INC hardware and processing algorithm.

Designed to be placed anywhere in the MWD toolstring, or more frequently in close proximity to the Pulser Driver, the module is designed to provide accurate Static and Dynamic Inclination measurements closer to the bit.

As part of Azimuth's extended vibration range, the unit has been qualified to 50Grms vibration and rated to 2000g shock.

The module provides a range of communications options, including TTL and CanBus.

Precision Continuous INC

50Grms/2000G Rating

Ultra-short unit (8.0")

MWD Features

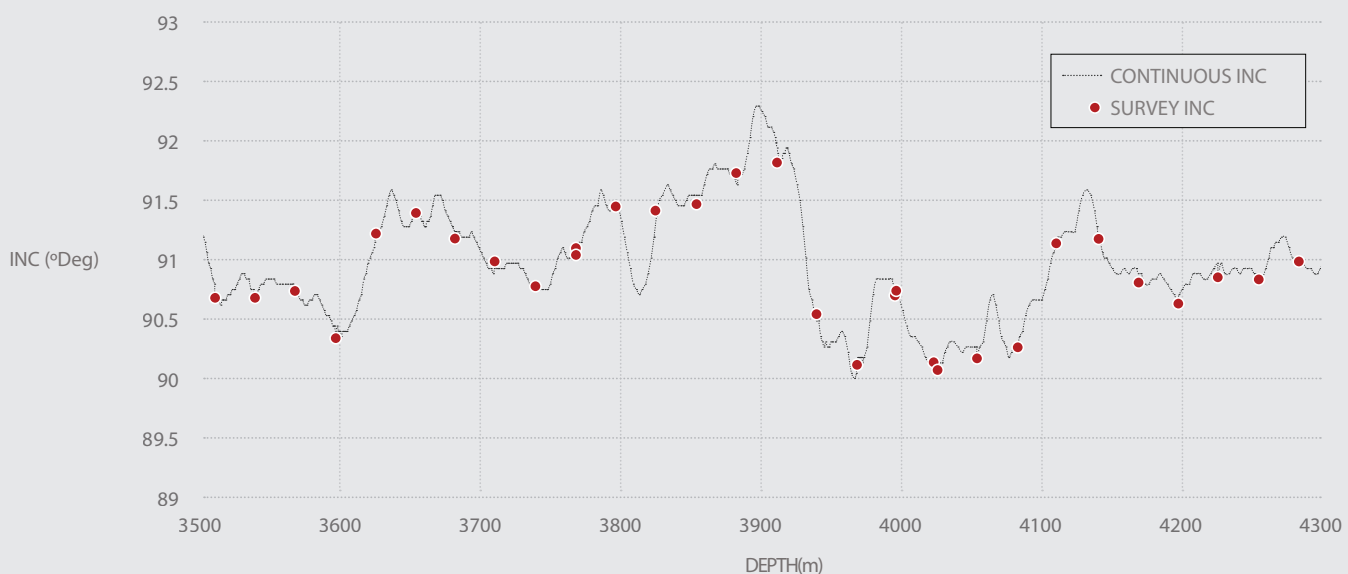
- Low power consumption
- CANBus/TTL
- Generic variables compatible
- Auto Survey Mode (Flow)
- Data Broadcast Mode
- Next Level Continuous INC
- 12-40VDC Input Voltage
- Customisation available
- 24-Bit Data Acquisition

Applications

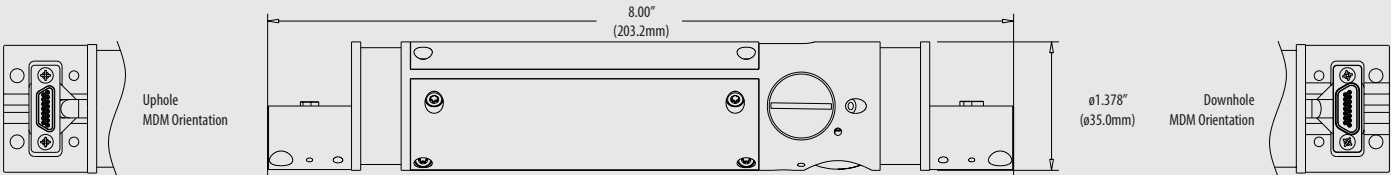
- Near Bit INC applications
- Near Pulser Configuration
- Continuous Near Bit INC data



AZIMUTH - CONTINUOUS INC vs SURVEY INC



Description			Value	Units	Comments
Sensor Performance					
Static Inclination Accuracy		125°C 150°C	+/-0.1° +/-0.15°	Deg	
Inclination Repeatability			+/-0.05	Deg	
TF/Rotation at >5° Inc - Accuracy			+/-0.5	Deg	
TF/Rotation at >5° Inc - Repeatability			+/-0.05	Deg	
Continuous INC Accuracy					
Inclination	Vibration	Rotating			
10-30°	30Grms	N	+/-0.1	Deg	
10-30°	30Grms	Y	+/-0.25	Deg	
10-30°	50Grms	N	+/-0.1	Deg	
10-30°	50Grms	Y	+/-0.25	Deg	
30-90°	30Grms	N	+/-0.1	Deg	
30-90°	30Grms	Y	+/-0.1	Deg	
30-90°	50Grms	N	+/-0.15	Deg	
30-90°	50Grms	Y	+/-0.1	Deg	
Electrical					
Operating Voltage			+12 to +40	Volts	
Power Consumption			0.21	Watt	
ADC Resolution			24	bits	
Interface			Serial TTL/CanBus		
Baud Rate			9600 - 153600	Baud	
Operating Modes			Master-Slave, Express Survey or Data Streaming	TTL/CanBus	
Data Output			ContINC, Survey INC, Temp, GX/Gy/Gz, Gtotal, RPM, GTF		
Connector Type			15-Pin MDM, Plug-Top, Socket - Bottom		
Mechanical					
Length			8.00 (203.2)	Inches (mm)	
Diameter			1.378 (35.0)	Inches (mm)	
Weight			0.25 (0.113)	lbs (Kg)	
Environmental					
Operating Temperature			-25 to 150	°C	
Survival Temperature			-40 to 165	°C	
Vibration			50	g rms	50 - 1000Hz
Shock			2000	g	0.5mS Half Sine



Contact Us

Azimuth Oilfield Systems Limited,
Unit 1 Kintore Business Park
Kintore, Aberdeenshire
AB51 0YQ, United Kingdom

T: +44 (0)1224 773635
E: info@azimuthmwd.com
www.azimuthmwd.com

Product Support

Azimuth Oilfield Systems Ltd. provides a responsive repair, calibration and product support service. Experienced personnel are available to troubleshoot or repair equipment, and provide general product technical assistance. If you need effective sensor support for your business, then contact support@azimuthmwd.com for more information.

Copyright Azimuth Oilfield Systems Ltd 2022. Azimuth Oilfield Systems Ltd. will occasionally make changes and improvements to products, and reserves the right to alter the specification without prior notice.